

Welcome to Wellington School



What is important at Wellington?



We have a happy and caring school community. We want you to be the best you can be and fulfil your potential. We have values that we follow:

- Honesty
- Excellence
- Fairness
- Community
- Endeavour

Our rewards system is based around our values.

They underpin all we do!

What do I need to remember for my first day?

We are very proud of our school and part of that is wearing the correct uniform.

We give you clear, simple uniform rules to follow and we expect you to stick to them from your very first day.

You will also need to bring basic equipment with you. A key tip is to buy it all in plenty of time. Check you have it all a couple of days before your first day and pack your school bag the night before.



You will need:

- A pencil case
- Two pens, blue or black
- A pencil
- A rubber
- A ruler
- Pencil crayons
- Pencil sharpener
- Plain dark bag/rucksack to carry everything
- Casio FX-85gt scientific calculator

Are you looking forward to coming to Wellington?

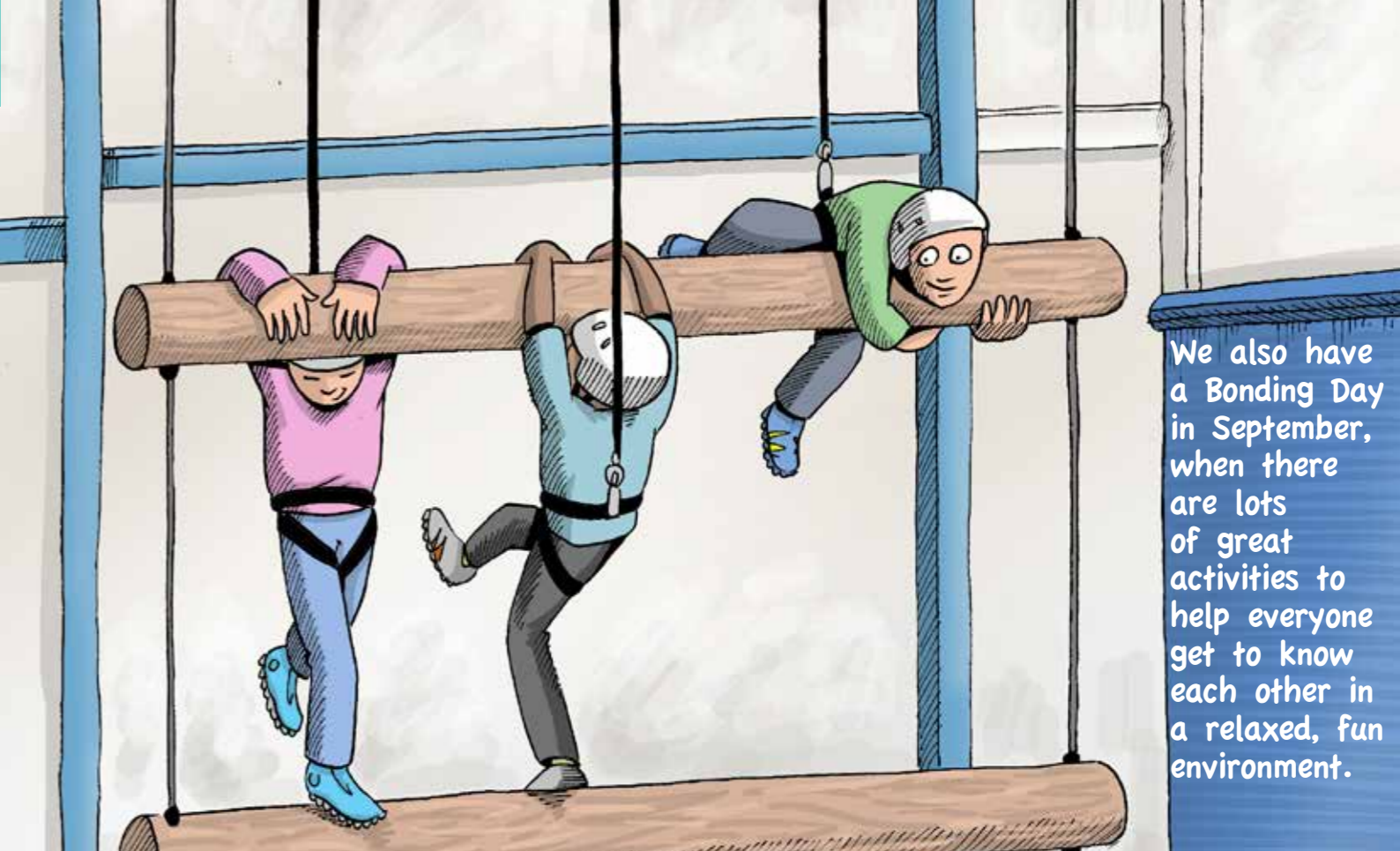
Who can I speak to if I need help?

Moving from Year 6 to Year 7 is a big change. It is exciting, but it is quite normal to have some worries too.

You can speak to any member of staff, but these teachers are here to look after Year 7s:

- Your Form Tutor - you will register with them twice a day.
- Mrs Dunne is the Pastoral Manager. She will look out for you and get to know you. She is always there to help.
- You can also speak to Mr Tomlinson, who is the Director of KS3.
- We also have 'T' Buddies, who are Year 8 pupils who are there to help if you feel it is easier to speak to a fellow pupil.
- Mrs Cooper, who is Assistant Headteacher for KS3.

Mrs Dunne, Mr Tomlinson and Mrs Cooper are all based in the Vale building.



We also have a Bonding Day in September, when there are lots of great activities to help everyone get to know each other in a relaxed, fun environment.

Do you know who to speak to if you need help?

What happens during the school day?



We have fantastic resources and a wide range of subjects at Wellington.

You will study subjects you are already familiar with in more depth. And you will start studying interesting new subjects!

In Year 7 you will study:

- English
- Science
- Geography
- Spanish
- Art
- Music
- PE
- REP
- Mathematics
- History
- French
- Design Technology
- Computing and ICT
- Drama
- PSHE



The School Day

Time of Bell	
08.30	Registration
08.50	Period 1
09.50	Period 2
10.50	Break
11.05	Period 3
12.05	Period 4
13.05	Lunch
14.00	Registration
14.04	Period 5
15.05	End of School Day

Remember to be on time for your lessons and have everything you need for that lesson.

If you need help finding your way round, just ask anyone for help. If you need help in your lessons, let your teacher know. They are there to help you!

What other activities can I do at Wellington?



One of the best things about moving into Year 7 is having the chance to take part in lots of new activities. We have lots of brilliant activities – there is something for everyone!



We want you to get involved, and because we feel it is so important, we do not set any homework for the first half term. This means that you have the time to try out lots of new activities.



This is a fantastic chance to make new friends and maybe discover something that you will enjoy for the rest of your life.



keyboard club school band
science club code club
cryptography club
football cricket
cheerleading origami
history club reading
choir philosophy club
rock band
Warcraft ethics club



You will also take part in project-based work where you create your own fundraising ideas for our Christmas fair. You will also work independently on your own project that you present to other students and staff at school.

What new activities are you going to try?

What do current Year 7 pupils like about Wellington?



Our Year 7 pupils have lots to say about life at Wellington. This is what they say:

'Everybody at Wellington is really kind and helpful and they will help you to find your way around and make sure you don't get lost.'

'The teachers are always there to help you if you have a problem or if you need help, especially when you first start.'

'Older students are always there to help you! There are also 'T' Buddies, Mentors and Anti-bullying & Mental Health Ambassadors.'

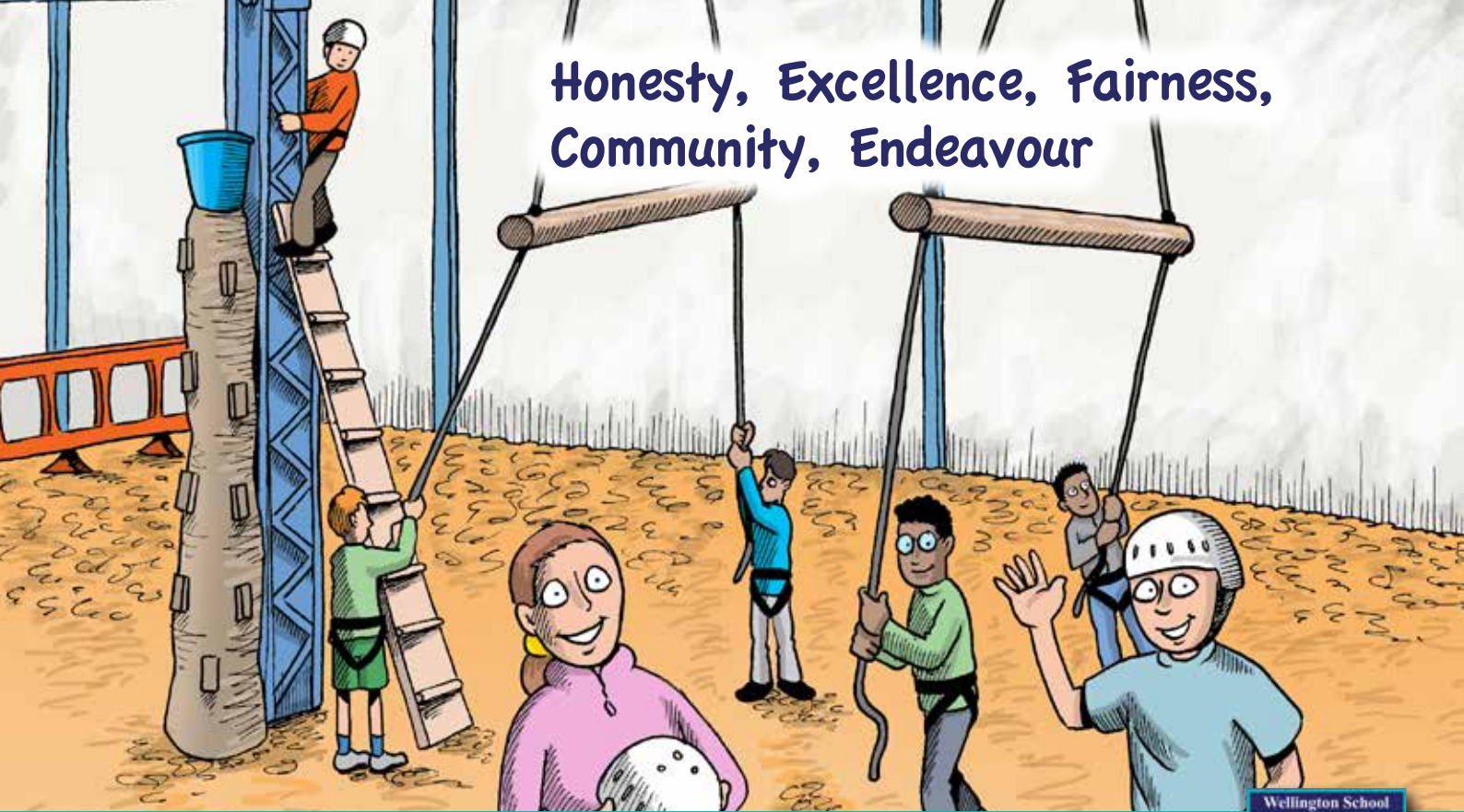
'You get to do loads of exciting things in the first few weeks, like sing at the Bridgewater Hall with all of Year 7.'

We hope you will enjoy settling in with us and we will do everything we can to make the start of your Wellington journey a success. We can't wait to meet you in September!



If you have any more questions, let us know. We are here to help!

Honesty, Excellence, Fairness, Community, Endeavour



Wellington School
Wellington Road
Timperley
Altrincham WA15 7RH

School Telephone: 0161 928 4157
School Fax: 0161 927 9147
Website www.wellington-school.co.uk
School Email: admin@wellington-trafford.sch.uk
For SEN queries: sen@wellington-trafford.sch.uk

