



# Music Department Activities

## Week commencing 22<sup>nd</sup> April 2019

	Before School 7.45 a.m. – 8.15 a.m.	Lunchtime 1.25 p.m. – 1.55 p.m.	After School 3.05 p.m. – 4.15 p.m.
Monday		BANK HOLIDAY	
Tuesday		<b>Keyboard Club</b> Room 17 Miss Lee	<b>Rock Band</b> Room 17 Miss Lee
Wednesday		<b>Sing</b> Room 18 Mrs Moorhouse	<b>SCHOOL BAND</b> Room 17 Miss Lee
Thursday		<b>G1-5 Theory / Y11</b> Room 18 Mrs Moorhouse	
Friday		<b>Sing with 7s</b> Room 18 Mrs Moorhouse	

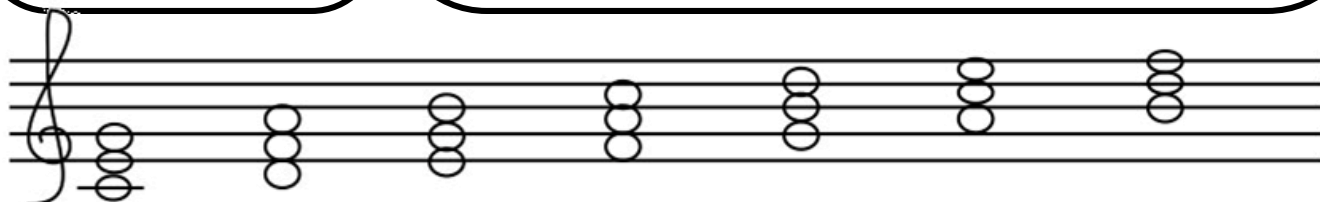
### Music of the Week

'Come what May' by Ewan McGregor and Nicole Kidman

### GCSE Vocab

Year 10 & 11 – Can you give an examples of pieces which follow these structures?

Binary	Ternary	Rondo
Strophic	Variations	32 bar song
12 bar blues	Verse and Chorus	



Tonic Triad	Supertonic Triad	Mediant Triad	Subdominant Triad	Dominant Triad	Submediant Triad	Leading note Triad
Tonic Chord	Supertonic Chord	Mediant Chord	Subdominant Chord	Dominant Chord	Submediant Chord	Leading note Chord
Chord I	Chord ii	Chord iii	Chord IV	Chord V	Chord vi	Chord vii <sup>o</sup>